

FEIDER MACHINES



AIR FILTRATION SYSTEM

Model: AIRCLEAN

CAUTION: Read the instructions before using the machine!

CONTENTS

1. SAFETY INFORMATIONS.....	3
2. ELECTRICAL INFORMATION.....	4
3. KNOW YOUR AIR FILTRATION SYSTEM.....	7
4. TECHNICAL DATA.....	8
5. ASSEMBLY AND ADJUSTMENTS.....	8
6. OPERATION.....	9
7. MAINTENANCE.....	10
8. EXPLODED VIEW & PARTS LIST.....	11
9. WIRING DIAGRAM.....	15
10. DISPOSAL AND RECYCLING.....	16
11. DECLARATION OF CONFORMITY.....	16
12. WARRANTY.....	17
13. PRODUCT FAILURE.....	18
14. WARRANTY EXCLUSIONS.....	19

1. GENERAL SAFETY RULES

Safety is a combination of common sense, staying alert and knowing how your item works.

SAVE THESE SAFETY INSTRUCTIONS.



WARNING: To avoid mistakes and serious injury, do not plug in your tool until the following information have been read and understood.

1) This appliance can be used by children aged from 8 years and above under supervision. This appliance can be used by persons with reduced physical, sensory or mental capabilities or lack of experience and knowledge if they have been given supervision or instruction concerning use of the appliance in a safe way and understand the hazards involved. Children shall not play with the appliance. Cleaning and user maintenance shall not be made by children without supervision.

If the supply cord is damaged, it must be replaced by the manufacturer, its service agent or similarly qualified persons in order to avoid a hazard.

- 2) To reduce the risk of injury and electric shock hazards, unplug the air filtration system before replacing filters or otherwise engaging in maintenance or service.
- 3) If mounting the air filtration system to the ceiling:
 - a. Make sure the bottom of the air filtration system is at least 2.1m from floor level.
 - b. Anchor the air filtration system only to building structures capable of holding at least 45kg.
 - c. Do not anchor the filtration system to non-

structural components such as drywall, false ceiling panels, etc.

- 4) Position the air filtration system so that it is at least 1m away from any corner and from any heating, cooling, or air circulation vents
- 5) Do not use the air filter in environments that have poisonous gases, fumes, noxious smoke, or other chemical risks. This filtration system is only designed to filter dust, airborne bacteria, small particles, etc.
- 6) Do not expose the air filtration system to water. Do not use in wet or damp environments. Failure to comply with this instruction may cause damage to the unit and electric shock or other injury to the user.
- 7) Do not connect a power tool to expel waste or dust directly into the air filter. Doing so may damage the air filter.
- 8) This filtration system is designed to filter many airborne contaminants that may damage the human respiratory system. However, the use of this system does not mean that other safety measures such as dust masks may be ignored. Seek medical attention immediately if you experience any worrying respiratory symptoms.

2. ELECTRICAL INFORMATION

GROUNDING INSTRUCTIONS

In the event of a malfunction or breakdown, grounding provides a path of least resistance for electric current to reduce the risk of electric shock. This tool is equipped with an electric cord having an equipment-grounding

conductor and a grounding plug. The plug must be plugged into a matching outlet that is properly installed and grounded in accordance with all local codes and ordinances.

- Do not modify the plug provided. If it will not fit the outlet, have the proper outlet installed by a qualified electrician.
- Improper connection of the equipment-grounding conductor can result in a risk of electric shock. The conductor, with insulation having an outer surface that is green with or without yellow stripes, is the equipment-grounding conductor.
- If the replacement of the supply cord is necessary, this has to be done by the manufacturer or his agent in order to avoid a safety hazard.
- Check with a qualified electrician or service personnel if the grounding instructions are not completely understood, or if in doubt as to whether the tool is properly grounded.
- Use only three wire extension cords that have three-prong grounding plugs and three-pole receptacles that accept the tool's plug.

CAUTION: In all cases, make certain the outlet in question is properly grounded. If you are not sure, have a licensed electrician check the outlet.

WARNING: This tool is for indoor use only. Do not expose to rain or use in damp locations. Guidelines for using extension cords.

- Make sure your extension cord is in good condition. When using an extension cord, be sure to use one

heavy enough to carry the current your product will draw. An undersized cord will cause a drop in line voltage resulting in loss of power and overheating. The table below shows the correct size to be used according to cord length and nameplate ampere rating. When in doubt, use a heavier cord. The smaller the gauge number, the heavier the cord.

- Make sure your extension cord is properly wired and in good condition. Always replace a extension cord or have it repaired by a qualified person before using it.

AMPERAGE	REQUIRED GAUGE FOR EXTENSION CORDS			
	25 ft.	50 ft.	100 ft.	150 ft.
3.4 A	18 gauge	16 gauge	16 gauge	14 gauge

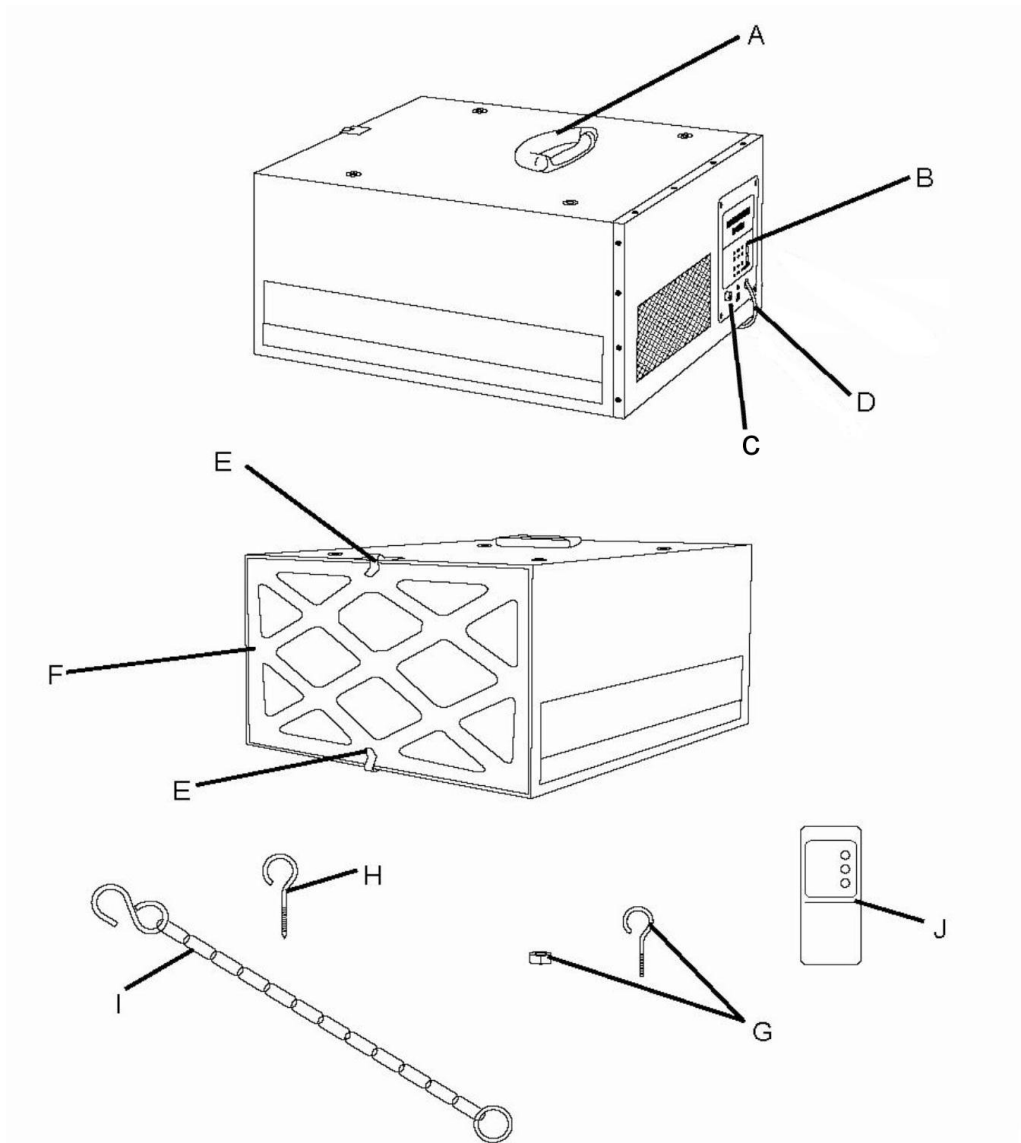
- Protect your extension cords from sharp objects, excessive heat and damp/wet areas.



Use a separate electrical circuit for your tools. This circuit must not be less than a #12 wire and should be protected with a 15 A time-delayed fuse. Before connecting the motor to the power line, make sure the switch is in the OFF position and the electric current is rated the same as the current stamped on the motor nameplate. Running at a lower voltage will damage the motor.

WARNING: This tool must be grounded while in use to protect the operator from electric shock.

3. KNOW YOUR AIR FILTRATION SYSTEM



A	Carrying handle		F	Outer filter
B	Control panel/receiver		G	Hangers and locknuts (4)
C	Fuse		H	Wood screw hooks (4)
D	Power cord		I	Chains (4)
E	Filter lock clip		J	Remote control

NOT SHOWN:

- 1 - Inner Filter (present inside of machine on arrival)
- 2 - AAA Batteries (Included)

Unpacking Parts:

Carefully unpack the air filter and all its parts. Do not discard the carton or any packaging until the air filter is completely assembled

4. TECHNICAL DATA

Model Number:	AIRCLEAN
Motor:	220-240VAC, 50Hz, 125W 1/6HP
Air Flow Speeds:	300, 350, and 400 CFM
Filter:	1 micron inner/5 micron outer
Sound Output:	50~60 dB
Maximum Remote Control Distance:	50 feet
Weight:	13.85kg
Transmission frequency band :	433.050-434.790 MHz
Maximal transmission power :	9 dBm

5. ASSEMBLY AND ADJUSTMENTS

The air filter is designed to circulate air and filter wood and other non-metallic dust. The unit requires only minimal assembly. However, it is important to consider how and where to place the unit. When selecting a site, make sure there is a suitable power source nearby.

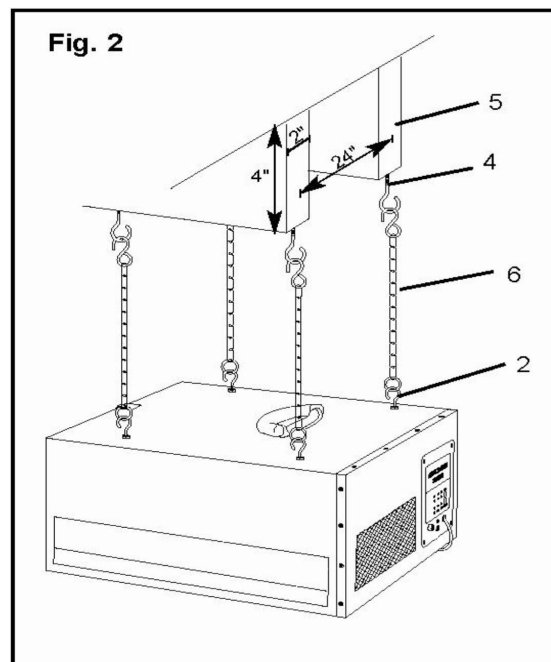
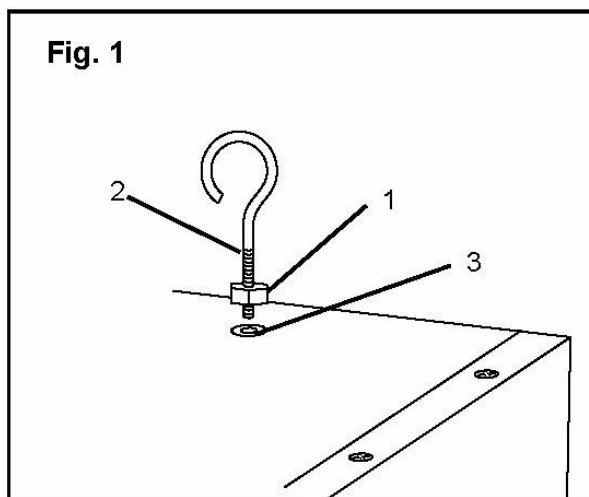
HANGER PLACEMENT (Fig. 1)

- 1) Thread the locknuts (1) almost all the way up the hanger (2).
- 2) Thread a hanger into each of the four mounting holes (3) on the top of the air filter cabinet.
- 3) Tighten each locknut against the cabinet top. Hold the hangers so that they do not spin while tightening the locknut.

CEILING PLACEMENT (Fig. 1 & 2)

Make sure the unit will be situated at least 2.1m above the floor and at least 1 m away from a corner and from any heating or air vents.

- 1) Install the wood screw hooks (4) into the building support structure. Do not mount the air filter to non-structural surfaces such as dry wall or false ceiling grids. The hooks are rated for this air filter and can support a maximum of 45kg.
- 2) Place a chain (6) on each wood screw hook (4).
- 3) Attach the hangers (2) on each chain (6).
- 4) Make sure the unit is level horizontally, and is at least 2.1m above the floor. If it is not, remove the air filter and adjust the length of the chain as needed. Then remount the unit.
- 5) Plug the air filter power cord directly into a power source.



6. OPERATION

The air filter can be operated directly using the control panel or with the remote control.

8.1 TURN ON AIR FILTER AND SPEED SETTINGS (Fig. 3 and 4)

- 1) Plug the power cord into an appropriate power source.
- 2) Press the ON/Speed button (1) on the control panel or the remote control to power on the air filter. The air filter will be running at low speed. The LO LED will light, indicating that the unit has been worked at low speed.
- 3) Press the ON/Speed button (1) again to change the speed. The LEDs (2) next to the ON/speed button on the control panel indicate the selected speed-high, medium, or low.

8.2 SET THE TIMER (Fig. 3 and 4)

A timer allows you to operate the filter set the length of time (1, 2, 4 hours and clear the timer) that the air filter will operate before shutting off automatically. The air filter can be set the timer with the remote control only.

- 1) Press the TIME button (5) on the remote control to start the timer. The cycle is 1 hour, 2 hours, 4 hours and clear the timer.
- 2) Press the TIME button (5) on the remote control to set the timer. The LEDs (4) on the control panel indicate the amount of time selected.



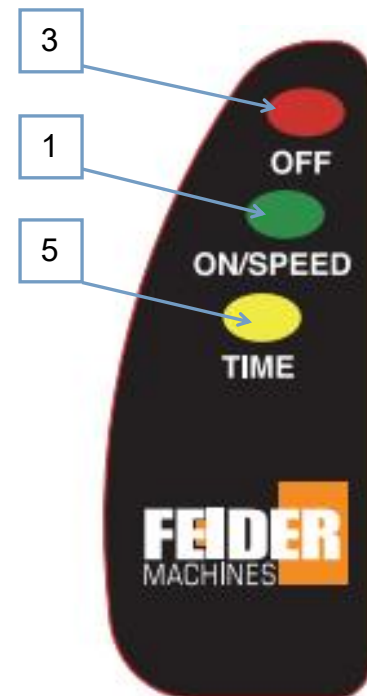
Note: the unit will shut off automatically after the selected time interval elapses. When you choose clear the timer, the air filter will keep running until turning it off.

The Air Filtration system can be turned off using the OFF button on the remote control.

Fig.3



Fig.4



7. MAINTENANCE

WARNING:

- To reduce the risk of injury and electric shock, unplug the air filtration system from the power source before changing the air filters or servicing the unit.
- If the replacement of the supply cord is necessary, this has to be done by the manufacturer or his agent in order to avoid a safety hazard

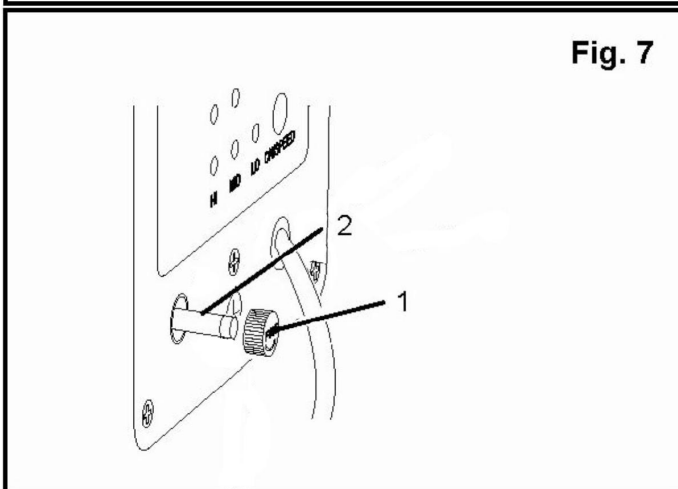
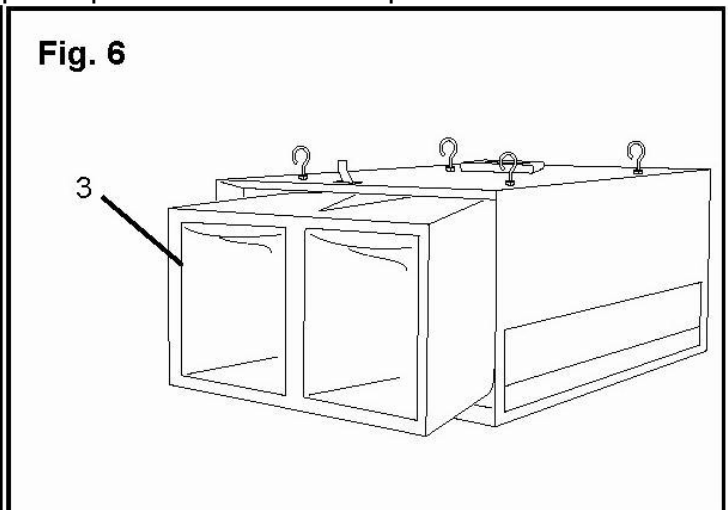
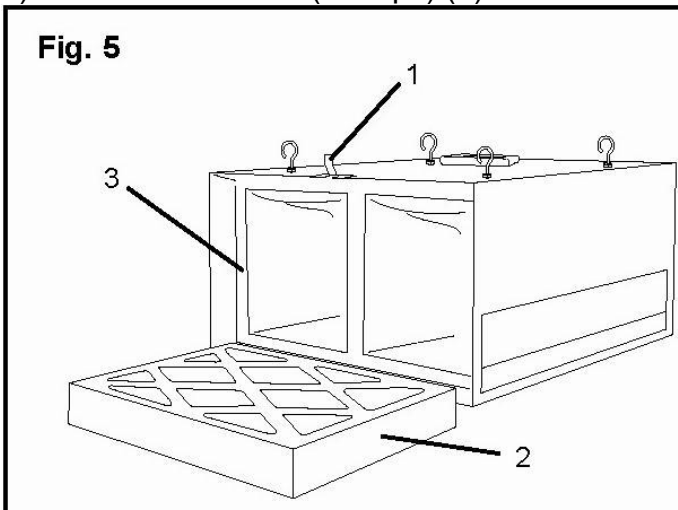
9.1 CHANGE THE FILTERS (Fig. 5 and 6)

Check the inner and outer filters periodically, depending on the amount of use, and change the filters when needed. Clogged filters will reduce the amount of air circulating through the filter. Replacement filters for this unit available.

- 1) Lift up the clips (1) and remove the outer filter (2) from the cabinet housing.
- 2) Pull the inner filter (3) out of the cabinet.
- 3) Install a new inner filter.
- 4) Install a new outer filter. The arrow on the outside of the filter indicates the proper direction to insert the filter into the cabinet.

9.2 CHECK AND REPLACE THE FUSE (Fig. 7)

- 1) Turn the fuse cap (1) counterclockwise to loosen and pull the fuse away from the control panel.
- 2) Insert a new fuse (2 amps) (2) in the fuse cap and put it into the control panel.

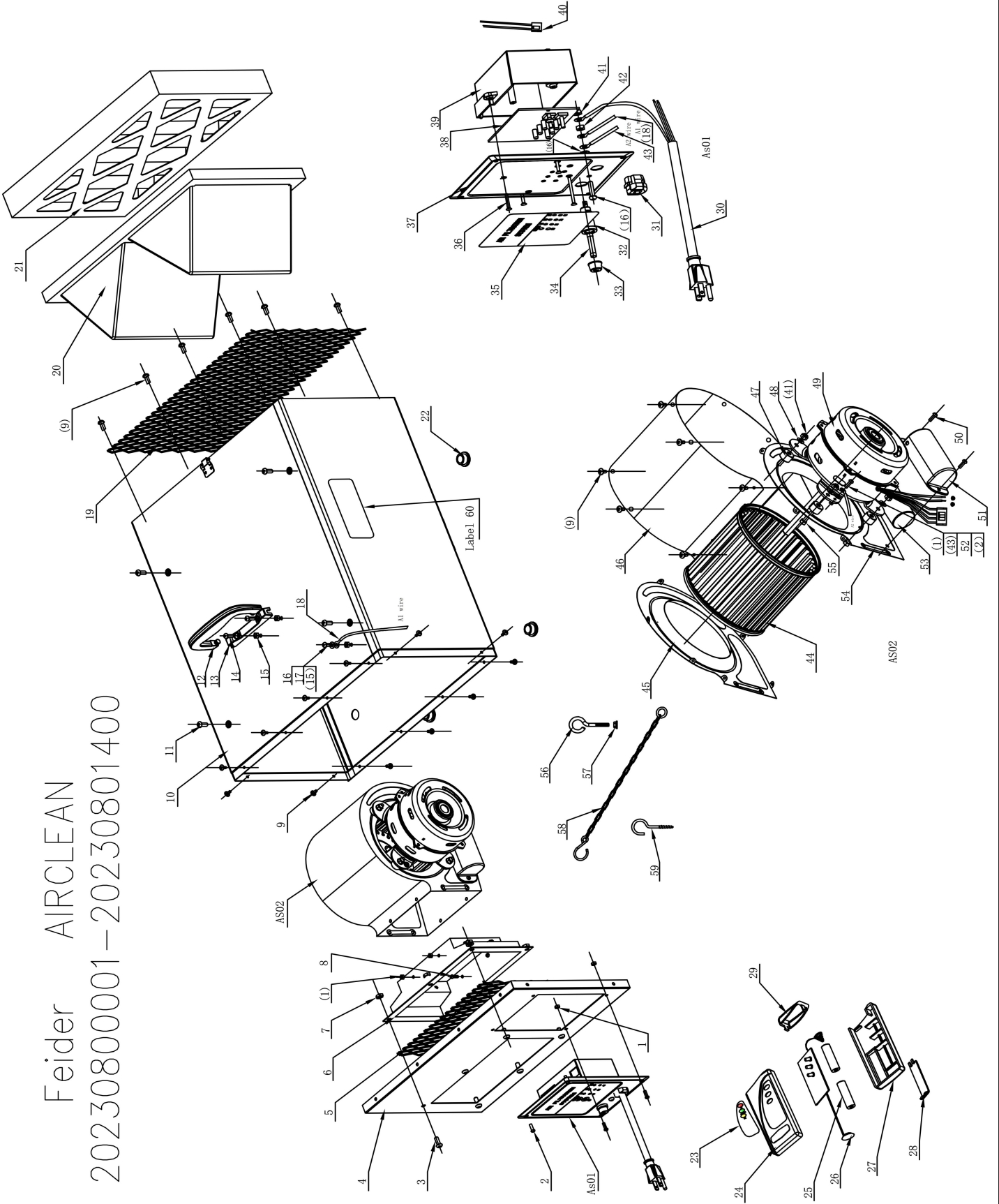


To replace the batteries in the remote control:

- 1) Open the remote control battery compartment
- 2) Replace used batteries with 2 AAA batteries
- 3) Close battery compartment

8. EXPLODED VIEW & PARTS LIST

Feider AIRCLEAN
20230800001-20230801400



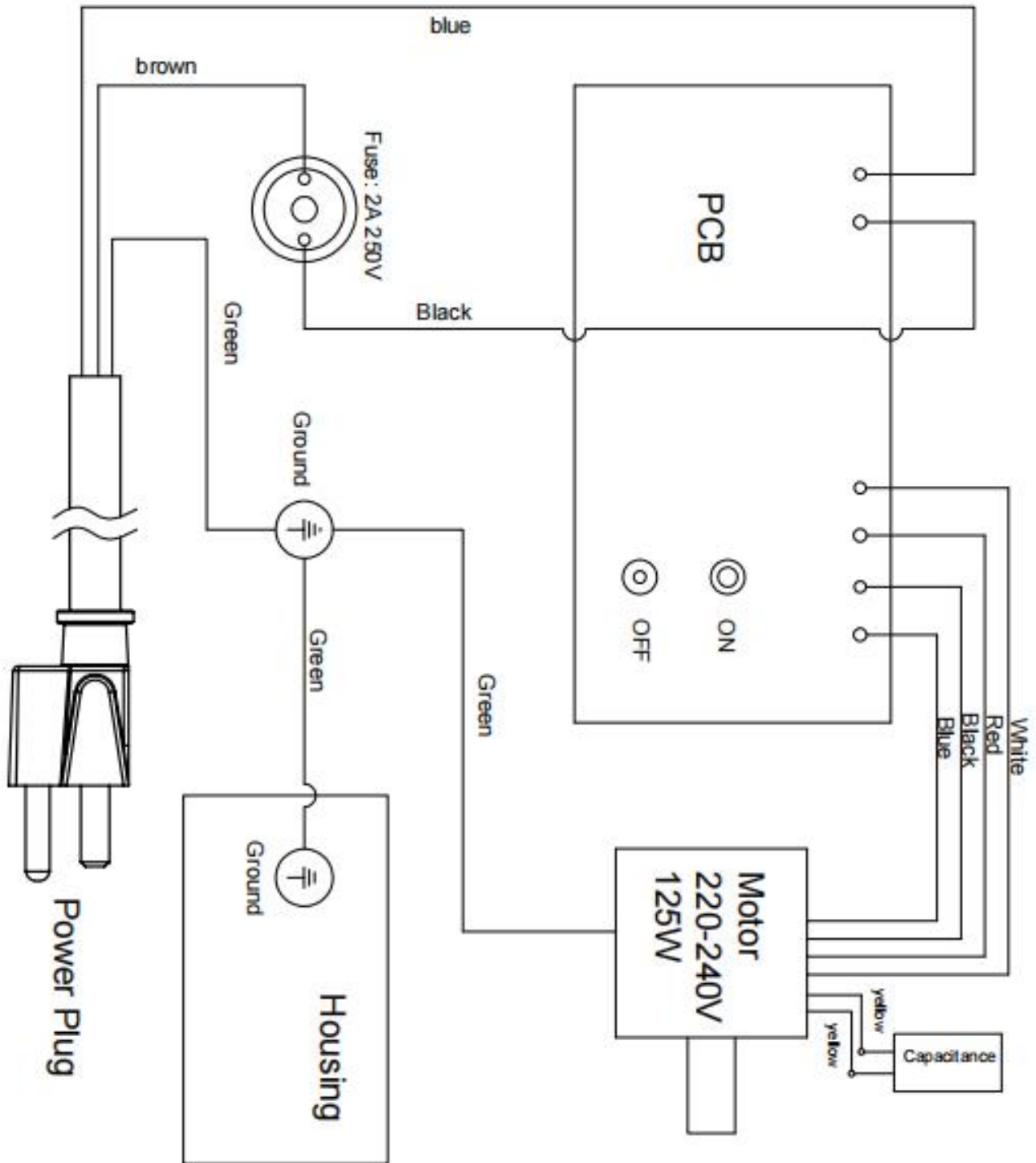
Parts List for the Air Filtration System

Item No.	Supplier Part Nr.	Description	Qty.
1	9NG04D0	Hex nut	13
2	9SJAD04-12D	Pan head screw	13
3	9SJAD06-15D	Pan head screw	6
4	9166-600101	Air box front cover	1
5	9068-600101	Grid plate	1
6	9004-600103	Air guide	1
7	9NG06D0	Hex nut	6
8	9SJCD04-12D	Hexagon socket flat head bolt	8
9	9SJAC04-10D	Socket head cap screw	32
10	9146-600101	Air box	1
11	9SQHD06-12D	Pan head screw	4
12	9094-600101	Handle	1
13	9094-600102	Handle bracket	1
14	9SJAD05-20D	Pan head screw	2
15	9NG05D0	Hex nut	4
16	9SJAD05-16D	Pan head screw	2
17	9WO05D0	External tooth lock washer	2
18	9027-600102	Wire	1
19	9068-600102	Grid plate	1

20	9163-600102	Inner filter	1
21	9163-600101	Outer filter	1
22	9046-600101	Rubber foot	4
23	9152-600101	Remote control label	1
24	9053-600103	Remote control top cover	1
25	9160-600101	Battery cover	2
26	9164-600101	Remote control PCB	1
27	9053-600104	Remote control bottom cover	1
28	9053-600105	Battery cover	1
29	9053-600106	Remote control front cover	1
30	9029-600102	Power cord	1
31	9172-600101	Strain relief	1
32	9042-600101	Fuse holder	1
33	9069-600101	Fuse holder cap	1
34	9084-600101	Fuse	1
35	9152-600102	Control panel label	1
36	9SEAC03-12D	Flat head screw	4
37	9053-600101	Switch box cover	1
38	9053-600102-01	Printed circuit board	1
39	9042-600103	Switch box	1
40	9144-600101	Wire strip	1

41	6NC05D0	Stop nut	5
42	9NA05D0	M5 Nut	1
43	9027-600101	Wire	1
44	9031-600101	Fan wheel	1
45	9142-600101-1	Fan housing cover	1
46	9142-600101-2	Fan housing	1
47	9161-600101	Rubber spacer	4
48	9WF05D1	Large washer	4
49	9004-600105	Motor	1
50	9SJAB04-14D	Self tapping screw	2
51	9042-600102	Capacitor cover	1
52	9WO04D0	Outer tooth washer $\Phi 4$	1
53	9033-600102	Capacitor	1
54	9142-600101-3	Fan housing cover	1
55	9SFDD05-25D	Pan head screw	4
56	9083-600102	Eye bolt	4
57	9ND06D	Flange nut	4
58	9050-600101	Hook chain	4
59	9083-600101	Hook eye screw	4
60	9083-600101	Right housing label	1

9. WIRING DIAGRAM (220-240VAC ONLY)



10. DISPOSAL AND RECYCLING



Electrical products should not be disposed of together with household waste. Please recycle at the collection point provided for this purpose. Please consult the local government or distributor for recycling advice. Proper handling of old equipment helps to protect the environment and health.

11. DECLARATION OF CONFORMITY



32, rue Aristide Bergès - ZI 31270 Cugnaux - France, déclare que,

Product: Air Filtration system
Model: AIRCLEAN

Serial number: 20230800001-20230801400

Is in conformity with the essential requirements and other relevant provisions of the applicable European Directives, based on the application of European harmonized standards. Any unauthorized modification of the apparatus voids this declaration.

European Directives

Directive RED 2014/53/EU

Directive LVD 2014/35/EU

RoHS directive 2011/65/EU + (EU) 2015/863

European harmonized standards

EN 60335-1:2012+A11:2014+AC:2014+A13:2017+A1:2019+A14:2019+A2:2019+ A15:2021,

EN 60335-2-65:2003+A1:2008+A11:2012 +A2:2022+A12:2022

EN 62233:2008

EN 50663: 2017

EN 62479: 2010

EN 301 489-1 V2.2.3

EN 301 489-3 V2.3.2

EN IEC 55014-1:2021

EN IEC 55014-2:2021

EN IEC 61000-3-2:2019+A1:2021

EN 61000-3-3:2013+A1:2019+A2:2021

EN 300 220-2 V3.1.1

Cugnaux, 30/05/2023

Philippe MARIE / PDG

Responsible of the technical file: M. Olivier Patriarc

12. WARRANTY

The manufacturer guarantees the product against defects in material and workmanship for a period of 2 years from the date of the original purchase. The warranty only applies if the product is for household use. The warranty does not cover breakdowns due to normal wear and tear.

The manufacturer agrees to replace parts identified as defective by the designated distributor. The manufacturer does not accept responsibility for the replacement of the machine, in whole or in part, and/or ensuing damage.

The warranty does not cover breakdowns due to:

- insufficient maintenance.
- abnormal assembly, adjustment or operations of the product.
- parts subject to normal wear and tear.

The warranty does not extend to:

- shipping and packaging costs.
- using the tool for a purpose other than that for which it was designed.
- the use and maintenance of the machine done in a manner not described in the user manual.

Due to our policy of continuous product improvement, we reserve the right to alter or change specifications without notice. Consequently, the product may be different from the information contained therein, but a modification will be undertaken without notice if it is recognized as an improvement of the preceding characteristic.

READ THE MANUAL CAREFULLY BEFORE USING THE MACHINE.

When ordering spare parts, please indicate the part number or code, you can find this in the spare parts list in this manual. Keep the purchase receipt; without it, the warranty is invalid. To help you with your product, we invite you to contact us by phone or via our website:

+33 (0)9.70.75.30.30

<https://services.swap-europe.com/contact>

You must create a "ticket" via the web platform.

- Register or create your account.
- Indicate the reference of the tool.
- Choose the subject of your request.
- Describe your problem.

Attach these files: invoice or sales receipt, photo of the identification plate (serial number), photo of the part you need (for example: pins on the transformer plug which are broken).



13. PRODUCT FAILURE

WHAT TO DO IF MY MACHINE BREAKS DOWN?

If you bought your product in a store:

- Make sure that your machine is complete with all accessories supplied, and clean! If this is not the case, the repairer will refuse the machine.
- Go to the store with the complete machine and with the receipt or invoice.

If you bought your product on a website:

- Make sure that your machine is complete with all accessories supplied, and clean! If this is not the case, the repairer will refuse the machine.
- Create a SWAP-Europe service ticket on the site: <https://services.swap-europe.com> When making the request on SWAP-Europe, you must attach the invoice and the photo of the nameplate (serial number).

Contact the repair station to make sure it is available before dropping off the machine.

Go to the repair station with the complete machine packed, accompanied by the purchase invoice and the station support sheet downloadable after the service request is completed on the SWAP-Europe site

Please keep your original packaging to allow for after-sales service returns or pack your machine with a similar cardboard box of the same dimensions.

For any question concerning our after-sales service you can make a request on our website <https://services.swap-europe.com>

Our hotline remains available at +33 (9) 70 75 30 30.



14. WARRANTY EXCLUSIONS

THE WARRANTY DOES NOT COVER:

- Start-up and setting up of the product.
- Damage resulting from normal wear and tear of the product.
- Damage resulting from improper use of the product.
- Damage resulting from assembly or start-up not in accordance with the user manual.
- Breakdowns related to carburetion beyond 90 days and fouling of carburetors.
- Periodic and standard maintenance events.
- Actions of modification and dismantling that directly void the warranty.
- Products whose original authentication marking (brand, serial number) has been degraded, altered or withdrawn.
- Replacement of consumables.
- The use of non-original parts.
- Breakage of parts following impacts or projections.
- Accessories breakdowns.
- Defects and their consequences linked to any external cause.
- Loss of components and loss due to insufficient screwing.
- Cutting components and any damage related to the loosening of parts.
- Overload or overheating.
- Poor power supply quality: faulty voltage, voltage error, etc.
- Damages resulting from the deprivation of enjoyment of the product during the time necessary for repairs and more generally the costs related to the immobilization of the product.
- The costs of a second opinion established by a third party following an estimate by a SWAP-Europe repair station
- The use of a product which would show a defect or a breakage which was not the subject of an immediate report and/or repair with the services of SWAP-Europe.
- Deterioration linked to transport and storage*.
- Launchers beyond 90 days.
- Oil, petrol, grease.
- Damages related to the use of non-compliant fuels or lubricants.

* In accordance with transport legislation, damage related to transport must be declared to carriers within 48 hours maximum after observation by registered letter with acknowledgement of receipt. This document is a supplement to your notice, a non-exhaustive list.

Attention: all orders must be checked in the presence of the delivery person. In case of refusal by the delivery person, it you must simply refuse the delivery and notify your refusal.

Reminder: the reserves do not exclude the notification by registered letter with acknowledgement within 72 hours.

Information:

Thermal devices must be wintered each season (service available on the SWAP-Europe site). Batteries must be charged before being stored.

FEIDER

MACHINES



BUILDER SAS
32, rue Aristide Bergès - ZI 31270 Cugnaux – France
Made in China in 2023